

ZIRCON FLOOR TILE

ZCN 100.200

IP68

YYZ ZIRCON floor tiles emit a subtle soft glow with a choice to change colors automatically through a controller compatible with DMX512 protocol. Combination of visual effects such as breathing, jumping makes the landscape design a feast for the eyes. Frequent applications include public areas landscape lighting, shopping malls, squares, plazas, driveways, walkways, patios, resorts, etc.

Suitable for walkover / pneumatic tyre load of max. 500Kg.

FEATURES

BODY	316L STAINLESS STEEL ENSURING HIGH CORROSION RESISTANCE
WORKING VOLTAGE	24V DC (Remote power supply)
RATED POWER	2.6W
LAMP LIFE	50,000 HRS
MOUNTING	FLOOR RECESSED
CONNECTION	OUTDOOR RATED CONNECTIONS
DIMENSIONS	100x200mm
OPERATION TEMP	-25° C - +50° C
CONTROL	ON/OFF, DMX512



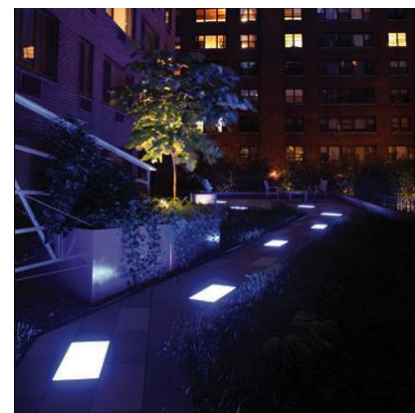
CREE/LUMILEDS
LED Quality

24V DC
Working Voltage

2.6W
Rated power

ELECTRICAL DATA

POWER CONSUMPTION	2.6W
SUPPLY VOLTAGE	24 V DC
CRI	80+
COLORS	3000K/ RGB/RGBW



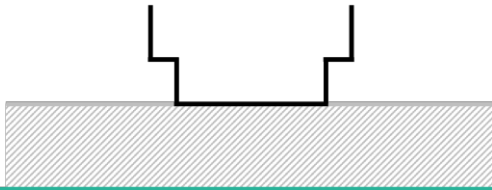
ORDERING LOGIC

PRODUCT	WATTAGE	COLOR TEMPERATURE		CONTROL
ZCN 100.200	2.6 - 2.6W	(CT 30)	3000K	On/OFF
		(RGB)	RGB	DMX512
		(RGBW)	RGBW	

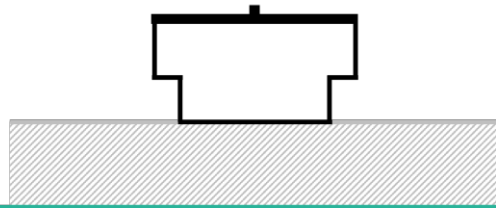
Sample: ZCN 100.200 - 2.6 - CT30 - ON/OFF

GENERAL INSTALLATION INSTRUCTION

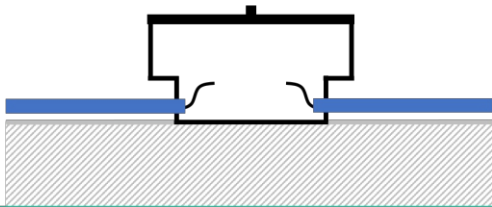
1. Position the box.



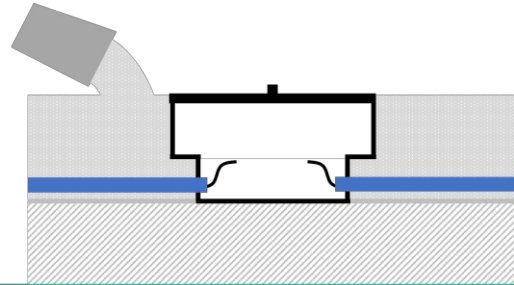
2. Cover the box with timber cover (approx. 12mm/0.5 inch.)



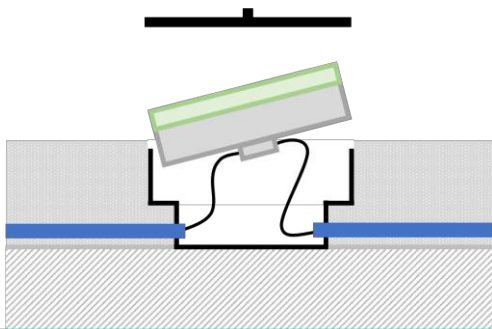
3. Feed in wires through the conduits.



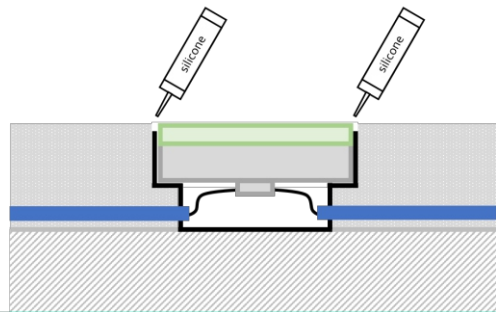
4. Pour concrete around the box.



5. Remove the cover and connect the floor tile.



6. Seal the gap with silicone.



Please note:

1. Timber cover or foam cover needs to be ordered separately when you place the order.
2. Adequate drainage must be provided for the base material if the floor tiles are to be located outside or at potentially wet location.
3. For wire connections please see additional instructions and/or diagrams specific to your project.